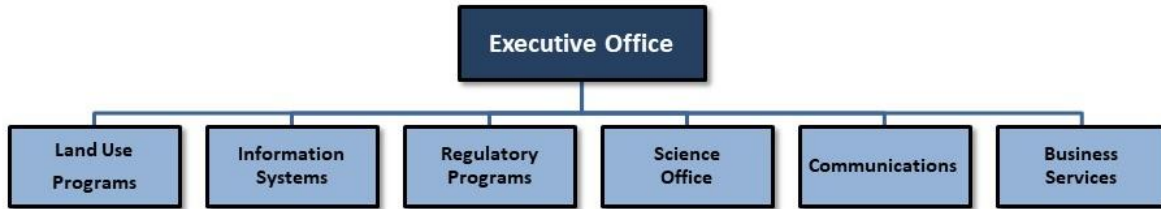




NEW JERSEY PINELANDS COMMISSION

ORGANIZATION CHART BY OFFICE

(Updated 6/10/2024)



Executive Office

Grogan, Susan R.	Executive Director
Danley, Charleen	Human Resources Manager
Noble, Jessica	Executive Assistant
Roth, Stacey	Chief, Legal and Legislative Affairs

Regulatory Programs

Horner, Charles	Director of Regulatory Programs
Field, April	Chief Permit Administrator
Capella, Timothy	Environmental Specialist
Carter, Keith	Regulatory Programs Specialist
Carter, Ken	Sup. Environmental Specialist
Demam, Ernest	Sup. Environmental Specialist
DiPalma, Donna	Technical Assistant
Ellis, Branwen	Environmental Specialist
Holgerson, Dawn	Office Assistant
Seeber, Fredrick	Environmental Specialist
Szura, Brian	Environmental Specialist
Ward, Rhonda	Environmental Specialist
Williams, Bethany	Environmental Specialist

Land Use Programs Office

Berg, Gina	Director of Land Use Programs
Lanute, Brad	Chief Planner
Elliott, Katherine	Planning Specialist
Fridell, Lori	Planning Assistant
Mallm, Amber	Planning Specialist
Paalvast, Marc	Cultural Resource Specialist
Simone, Steven	Planning Specialist

Science Office

Bunnell, John	Chief Scientist
Laidig, Kim	Principal Research Scientist
Burritt, Patrick	Research Scientist
Jeitner, Christian	Research Scientist

Information Systems

Bossett, Evan	MIS Manager
DeLorenzo, Mark	GIS Specialist
Foley, Morgan	MIS Specialist
Martin, Matthew	MIS Specialist
Pierce, Janet	Principal MIS Specialist
Schmidt, Jared	MIS Specialist

Communications

Leakan, Paul	Communications Officer
Mott, Joel	Principal Public Programs Specialist

Business Services

Lynch, Jessica	Business Services Manager
Ebersberger, Carol	Business Specialist
Keys, John	Maintenance Technician
Melodick, Theresa	Principal Clerical Assistant
Spires, Patricia	Principal Business Assistant